

# CONCEPT

VOL. 137

International Magazine of Competition CA 현대건축사 SEPTEMBER 2010

**THE ANANTI CLUB, SEOUL** Ken Min Sungjin

**Dee and Charles Wylie Theatre** FXF + OMA

**Curve Theatre** Rafael Viñoly

**Hangzhou Triaxial Field** Steven Holl

**National Museum of Contemporary Art at Seoul** mp\_Art + SIAPLAN



ISSN 1288-4262

# PARAMETER

## Taiwan Centers for Disease Control \_ Hsinchu County, Taiwan

As John Dewey suggests above in *The Quest for Certainty*, scientific study and research can only be as great as the curiosity and inquisitive nature with which it begins. To serve as a symbol of its ideological nature, the architecture of the Taiwan Centers for Disease Control(CDC) must embody the same fervor and determination found in its researchers' quest for scientific progress.

미국의 철학자이자 교육학자였던 존 듀이가 '확실성의 탐구'에서 제안한 바와 같이, 과학적인 학습 및 연구는 오직 원대함과 호기심 그리고 계속 되는 탐구로부터 시작된다. 타이완 질병관리센터(CDC)의 건축물은 이러한 이념적인 특성의 상징적 역할을 이행하기 위해 연구자들의 과학적인 진보와 탐구에서 발견되는 열정 및 해답을 구체화 하고 있다.

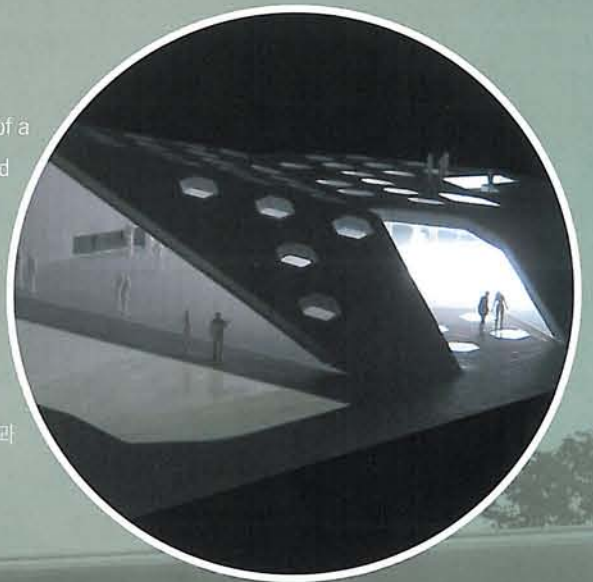




## Hangzhou Triaxial Field \_ Hangzhou, China

Triaxial Field lies on the edge of a wetlands area in the Chinese city of Hangzhou. While it is part of a larger development of hotels and villas, it is oriented around the views of the natural wetlands and the water channel. Rather than designing an "object" building, this project is a field that merges landscape and architecture. The building is flanked on three sides by water ponds which emphasize the building's connection with the natural.

트라이액시얼 필드는 중국 항저우 습지대 가장자리에 위치한다. 본 프로젝트는 대규모 호텔과 빌라 단지의 한 부분인 동시에 천연 습지대이며 수로이다. 건축가는 계획단계에서 단순히 평이한 건축물로 디자인 하기 보다는 조경과 건축을 하나로 통합하는 것에 중점을 두었다. 이에 따라 건물의 3면은 연못과 접해 있어 자연과의 긴밀성이 두드러진다.



## Local Traffic Hub Europaplatz \_ Graz, Austria

In order to cope with the increasing numbers of passengers at Graz Central Station and to reorganise the surrounding traffic, the existing tram connection at the front of the station is to be moved underground. This will increase usage and make the surface and pedestrian network more attractive.

The large number of connections with public transport from the urban city and surrounding regions has presented the opportunity to develop a multifunctional inner-city centre with the central station as its focus, communicating urbanity and making stopping here a pleasure.

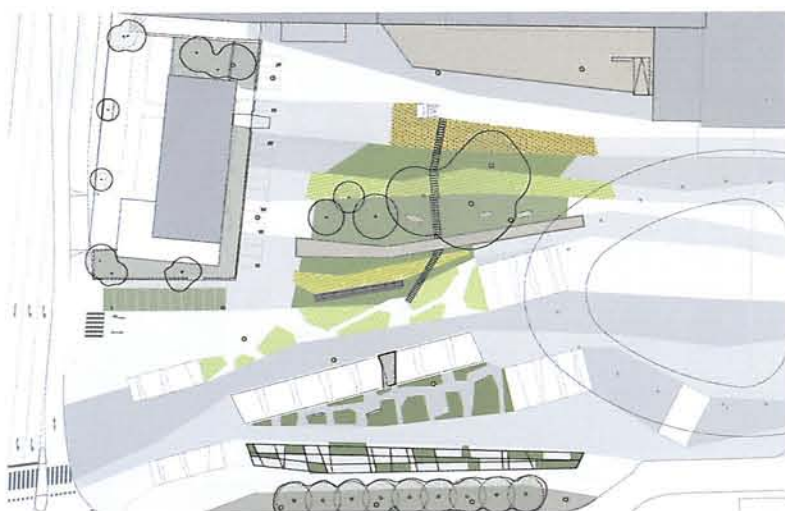
계획안은 그라즈 센트럴역의 증가하는 승객 수에 대처하는 한편, 주변 교통 환경을 개선하기 위한 목적으로 역 앞에 설치된 기존 선로를 지하로 옮기는 프로젝트이다. 변경안은 센트럴역의 실용성을 높이며 육상 수송 및 보행자들의 통행을 더욱 경쾌하게 만드는 요소가 될 것이다.



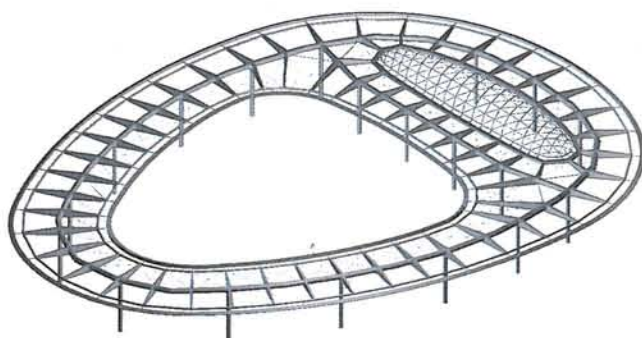


# Local Traffic Hub Europaplatz \_ Graz, Austria

Zechner & Zechner ZTGmbH



Site Plan



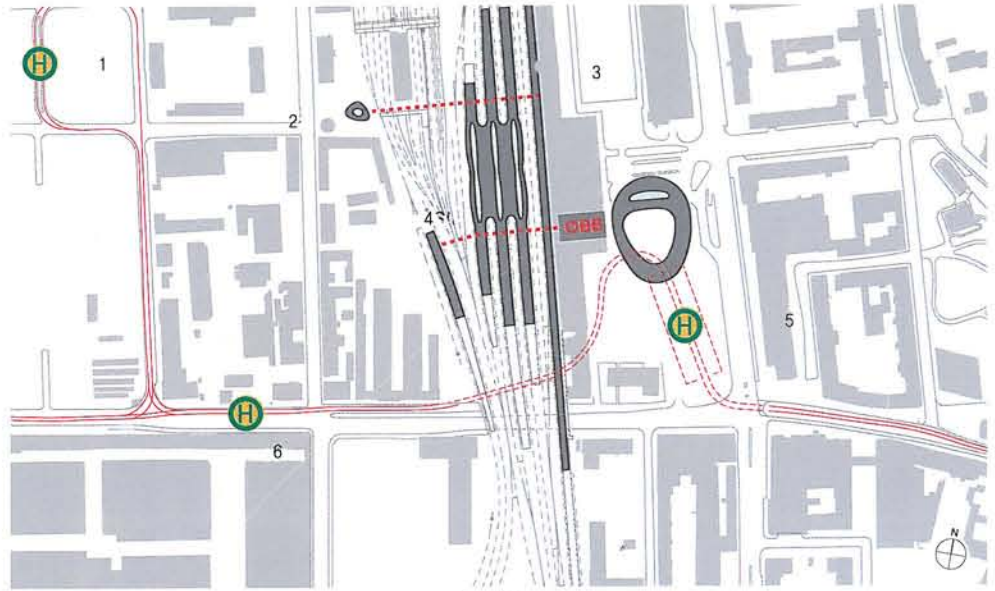
Axonometry of Canopy



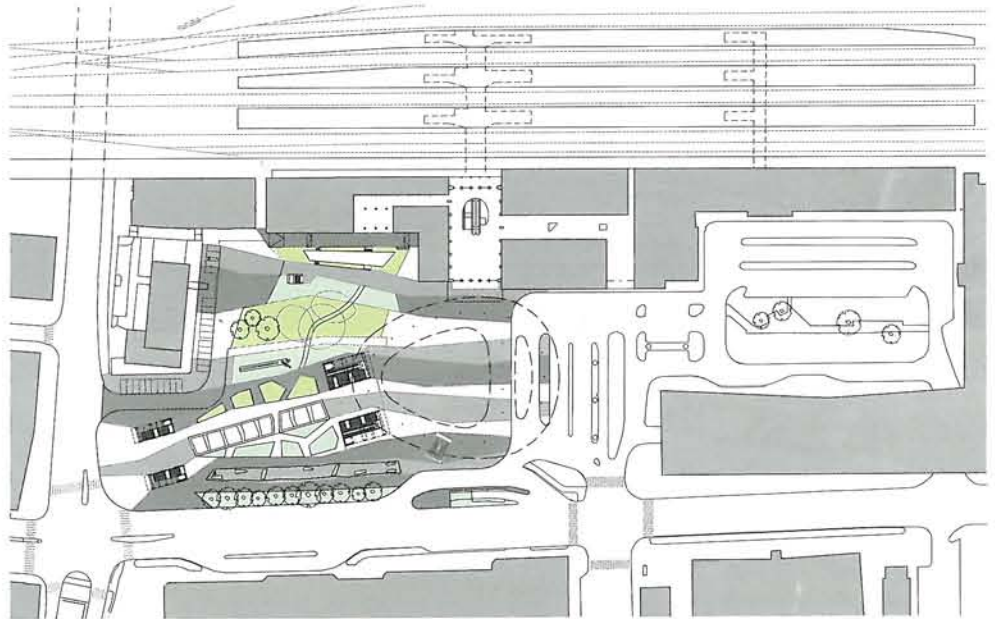


Use Public Transport, Station  
 Site Area 11,300m<sup>2</sup>  
 Bldg. Area 1,600m<sup>2</sup>  
 Bldg. Scale 1 Story below Ground  
 Structure Concrete and Steel  
 Max. Height 8m  
 Landscape Area 11,300m<sup>2</sup>  
 Exterior Finish Alucobond, Rieder Smart Elements, Glass  
 Architects Zechner & Zechner ZTGmbH  
 Transport Planning IKK ZTGmbH  
 Engineering Zenkner & Handel, Schimetta Consult  
 Green Space Planning 3zu0 Landschaftsarchitektur  
 Client Graz AG  
 Materials by Zechner & Zechner ZTGmbH

1. Asperngasse
2. Ausgang West
3. North Tunnel
4. South Tunnel
5. Hauptbahnhof
6. Waagner-Biro-Strasse



Overall Plan



Landscape Plan





### 로컬 트래픽 허브 오이로파플라츠

로컬 트래픽 허브 오이로파플라츠는 도심 속에서 시간을 보내고 여유를 만끽할 수 있는 녹색 구역 개발을 목표로 한다. 그 목표는 지하 전철역의 개선과 인근 교차로의 교통체증 완화 그리고 보행자들을 위한 매력적인 광장을 구성함으로써 해결된다.

**중앙역의 새로운 도심 지하 전철역 :** 새로운 도심 지하 전철역은 선로 구역 위로 오픈되어 있다. 이러한 방식은 자연적인 채광과 환기가 가능해 쾌적한 분위기를 연출한다. 프로젝트는 곡선의 구조로 이루어진 표면을 가지는데 이는 공간이 땅에서 잘린 것 같아 보이는 동시에 표면 위로 이어지는 모습이다.

**역 앞들의 재구성 :** 새로운 전철역 앞에 설치된 작은 공원은 고르지 못한 이질적인 구성으로 새로운 역사에 맞도록 재 디자인 되었다. 작은 공원의 지붕은 가장 중요한 요소로 역사의 중앙 광장과 버스 정류장 사이의 보호 고리를 형성하는 타원형 모양이다. 역사의 줄무늬 패턴은 작은 공원으로 이어지며 점차 다른 디자인과 함께 또 다른 구역으로 변모한다.

The client's goals of reorganising the tram lines to improve the connection between tram, bus and train lines, the relief of the traffic on nearby intersections, the creation of an attractive plaza and approach to the station, the improvement of pedestrian connections, good cycle path access and sufficient bicycle parking, as well as the development of inviting green areas to spend time in and recuperate and the creation of attractive sheltered waiting areas in the

open air were all successfully implemented.

**New underground tram station at the central station :** The new underground tram station is open above the track area and in this way a naturally illuminated and ventilated space with a comfortable atmosphere is created. With their curved and structured surfaces, the station spaces seem as though "cut" from the earth, the cuts in turn continuing on the surfaces.

**Redesign of the Station Forecourt :** The new underground station provides the opportunity to adapt the heterogeneous image of the station forecourt and the unsatisfactory route layout.

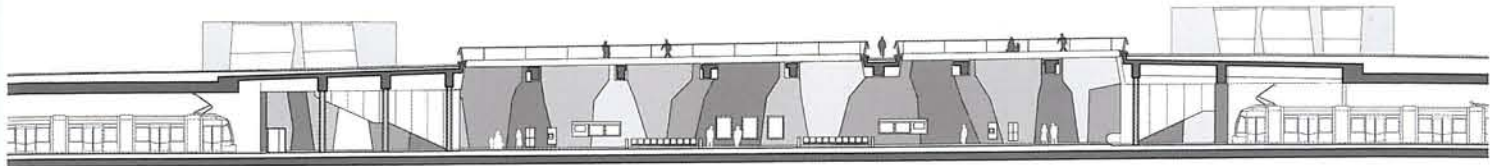
The roofing of the forecourt is the most significant element an oval, ring-shaped disk, which forms a sheltered ring between the station concourse and the bus stops.

The station's striped pattern continues at the forecourt level and gradually changes in different zones into differently designed green areas.

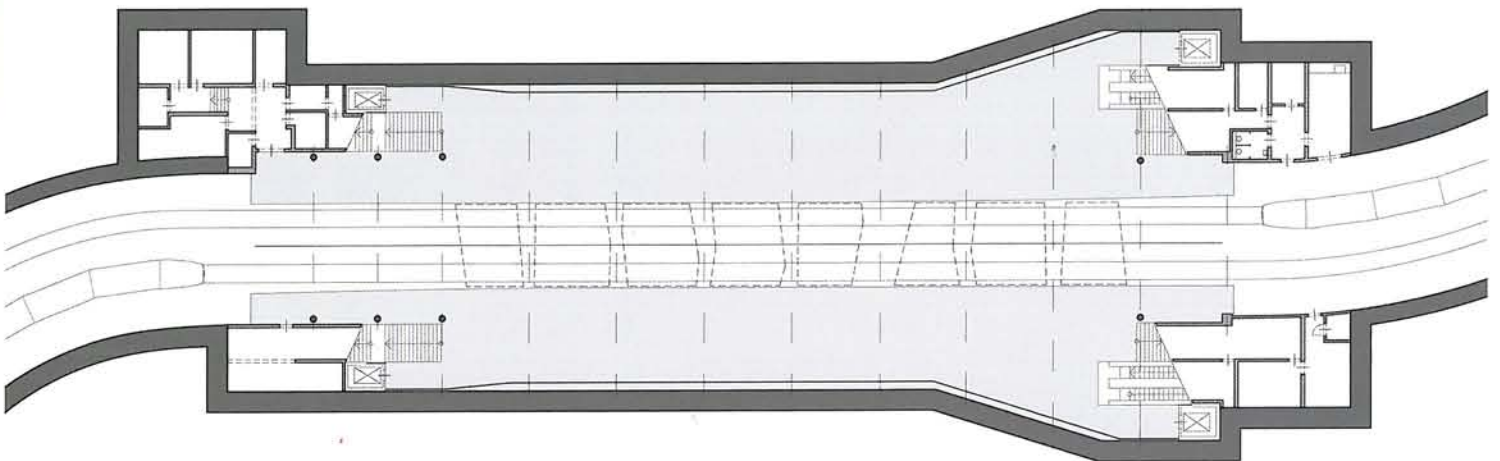
This project will result in improved cycle route access and new bike parking shelters in front of the station. The redesign of the forecourt is not simply based on the actual needs of the pedestrians namely short routes to their destinations but also the safety and attractiveness of their stop has been increased.

*Written by Zechner & Zechner ZTGmbH*





Longitudinal Section



Underground Level

