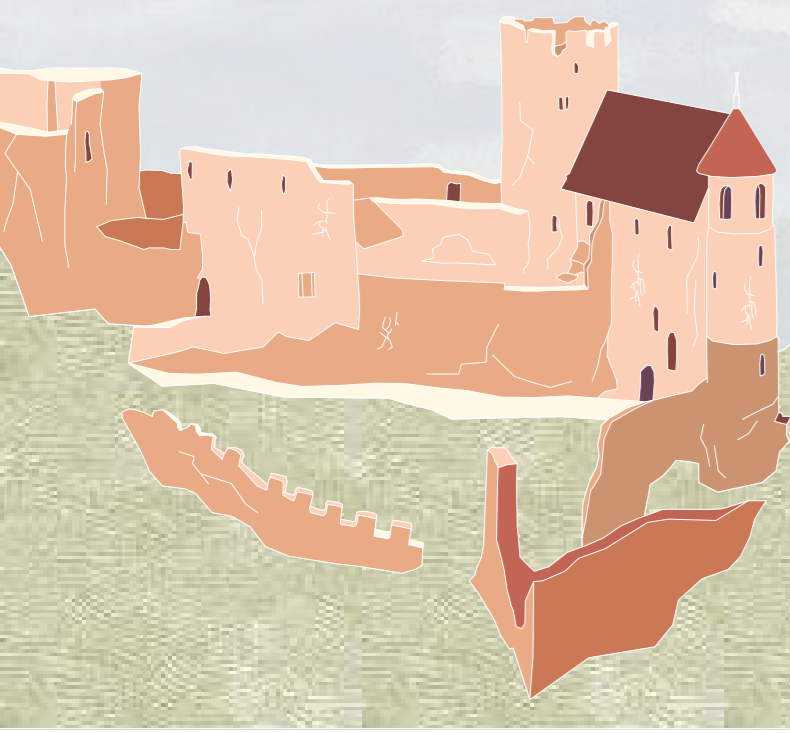


# REPAIR AND CARE

Atop Gösting ruin maintain the iconic ruin of Gösting Castle is slowly being consumed by the natural elements. Our proposal seeks to liberate such ever-changing natural forces responsible for shaping the landscape upon which the city rests. We aim to redefine Gösting as a place that prioritises care to promote working with nature to enable an ecological approach to future development and renewal.



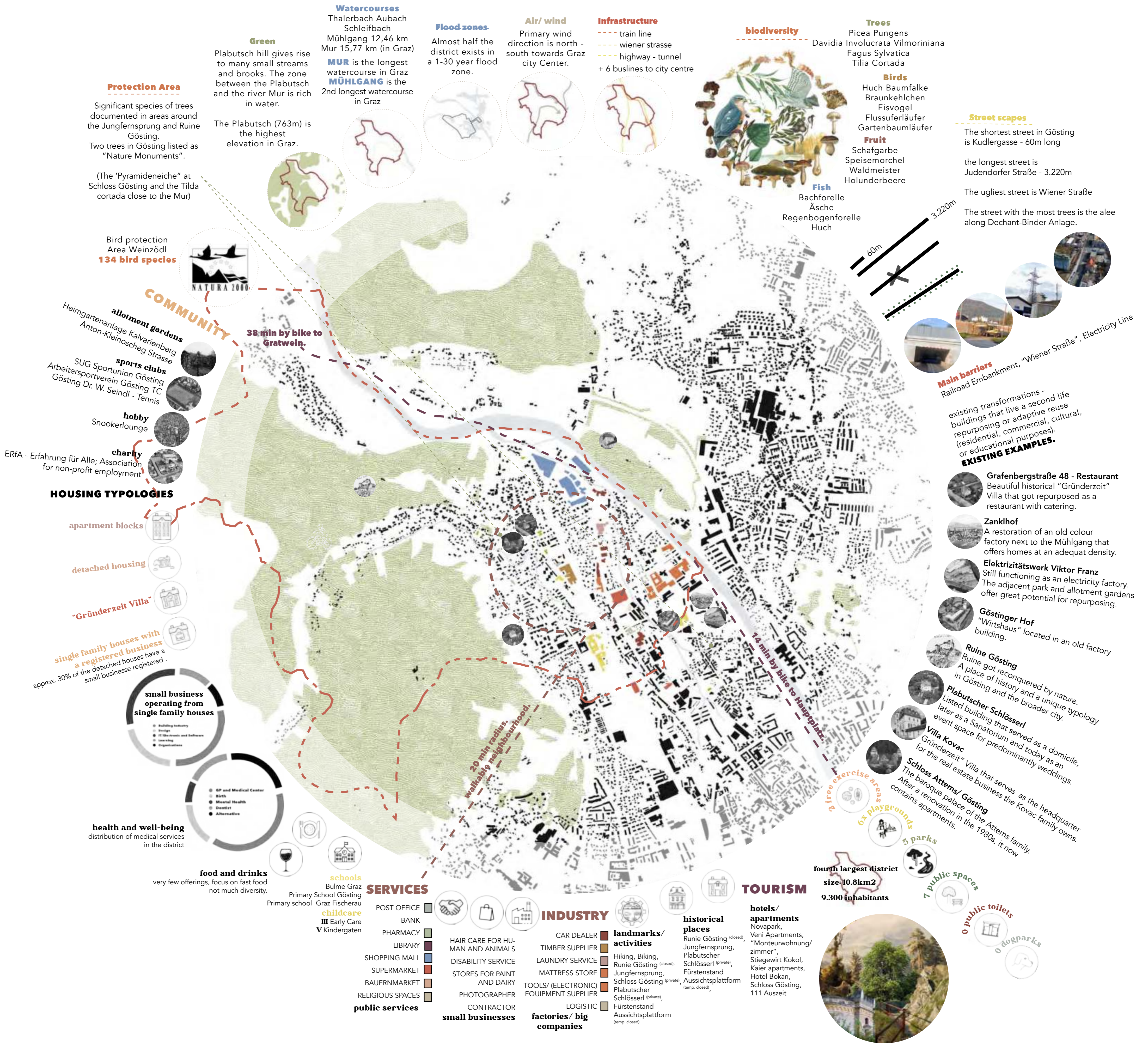
## A STRATEGIC RESPONSE TO RENEWAL IN GÖSTING

We have developed the following sequential themes that have informed our process of investigation and define the proposed implementation strategy for shaping Gösting in the upcoming decades. Led by an environmental approach it results in a vibrant and inclusive place for all.

# 'EMBED AN ENVIRONMENTAL APPROACH

To cultivate a collective ecological consciousness and nurture a sense of environmental responsibility, actions will be taken to uncover, protect and celebrate Gösting's eco-systems, waterways, landscapes & biodiversity. Giving priority to addressing the natural systems impacting

the area will result in a range of new social spaces where people co-exist and engage with nature through everyday life. This will occur by connecting the urban and wild forests, enhancing biodiversity links, and implementing sustainable water management practices.



## CLIMATE & FLOOD RISKS

The natural environments of Gösting are the areas greatest assets and similarly pose the most significant future risks. A rapidly changing climate necessitates that mitigating such risks be crucial, particularly as almost half the district is located in a 1-30 year flood zone. Immediate efforts are needed to reduce impervious surfaces, widen waterways and increase planting, particularly along waterways, to enable greater rates of natural evapotranspiration and reduce overall risk of flood. Likewise caring for important areas of biodiversity from along the Mur through to the surrounding mountains will assist in cooling and providing fresh, unpolluted air to greater Graz region.

## CONNECT THE CHAOTIC

Currently as the fourth largest district in Graz, Gösting offers its residents almost everything required to operate as a successful 20 minute neighbourhood. The area contains a considerable range of health, education and childcare services as well as a diverse range of industry and employment opportunities. However, it experiences a very fragmented urban form that remains extremely reliant on cars. Better connections are required across the suburb to promote increased use of active and public transport, to deprioritise car usage, connect the community and enhance the experience of the public realm.

## CELEBRATE WHAT'S GREAT

Gösting's Genius Loci is shaped by its historically significant architecture and landmarks. Notably the "Ruine Gösting" area, the "Jungfersprung", a number of historic villas and expansive natural surroundings. The district is embraced by picturesque landscapes, including rolling hills, lush forests, and many tranquil watercourses. The district experiences a strong sense of local pride, with active associations, that are mainly centered around sports, fostering a sense of belonging for many of its residents. Many notable are either not accessible to the public or require significant repair. Efforts could be made to improve the celebrated elements and make them inclusive to the entire community.

## AN EVOLVING THE ECONOMY

A wide number of well-established businesses exist within Gösting. They range in size from a number of large industrial sites to a significant amount of businesses that operate from home. Renewal presents an opportunity for the existing economy to develop through providing not only a new centrally located, fine-grain retail and hospitality tenancies but also office or co-working spaces that could see businesses evolve from working from home to having a more public facing position in the community. Collaborative places that offer business coaching, spaces for meetings, and shared office equipment could provide opportunities for the business community of Gösting to better develop and thrive.

## THE PERI-URBAN MINDSET

The infrastructure, lifestyle and character of Gösting is greatly defined by its peri-urban form. Unlike any other area in Graz, this sprawling urban form has remained very static, experiencing little growth in the last three decades. A shift is required to address the existing peri-urban mindset to see a collective community and environmentally focused mentality replace one that is private, individual and car dependant. Encouraging the development of a vibrant central activity district at the heart of the district that reflects local needs and achievements will additionally assist in a more self-sustainable community and provide a better balance between urban amenity and rural tranquility.

## AN INVITING IDENTITY

In order for Gösting to become a welcoming place, loved by its residents and visitors an identifiable and welcoming identity should be developed to better promote the village. Traditionally, the area was renowned for its history of craftsmanship. Such stories are not outwardly reflected through existing primary industries. This history could be better celebrated to attract people to visit to learn woodworking, pottery, or painting? Enabling easy, safe and accessible transport connections throughout the district is important. Whether arriving by riding along the Mur or taking the by tram Gösting should ultimately become a fantastic, walkable destination.

## ESTABLISH SUSTAINABLE CONNECTIONS

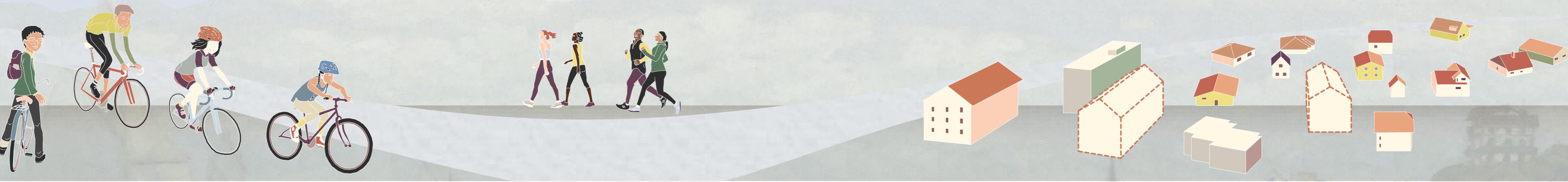
By leveraging the implementation of the proposed Transportation Hub as a catalyst for renewing the connective tissue across Gösting, new methods of enable sustainable mobility and movement of people, goods, knowledge, energy and waste can be established.

Dynamic and interesting public spaces will be oriented along water courses or biodiversity links to create circulation routes between key sites that prioritise active and public transport and compliment a highly liveable neighbourhood.

## IDENTIFY GROWTH OPPORTUNITIES

Unlike the rest of Graz, growth in Gösting has remained stagnant over the last three decades. Identifying targeted growth areas will enable areas of development to house future generations and diversify urban form, whilst maintaining and respecting the historical built fabric.

Assessing the functions and potential contributions that particular buildings and spaces could make to the urban fabric will identify where transformation opportunities exist and how to most appropriately increase density and revitalise the urban fabric.



### MOBILITY & MOVEMENT

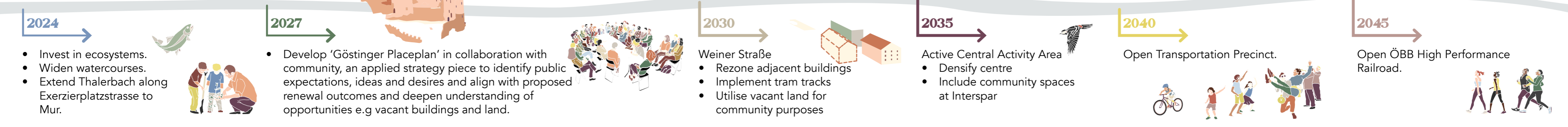
Proposed green corridors, mostly centred around Gösting's improved waterways, are to form the primary movement paths for pedestrian and cycling activity, as well providing crucial biodiversity connections throughout the district. The green corridors provide activated linkages between important locations like schools and the transport hub, as well as connecting the districts open public spaces from the hiking trails of Plabutsch through to the Mur. This proposal includes new public open spaces at the gardens of Schloss Gösting, a space behind the Volksschule along Thalerbach and the vacant field along the Muhlgang.

- WATERWAYS**
- GREEN CORRIDORS**
- OPEN SPACES & PARKS**
- ACTIVE TRANSPORT**
- TRAMS & BUSES**
- TRAINS**
- GROWTH OPPORTUNITIES**

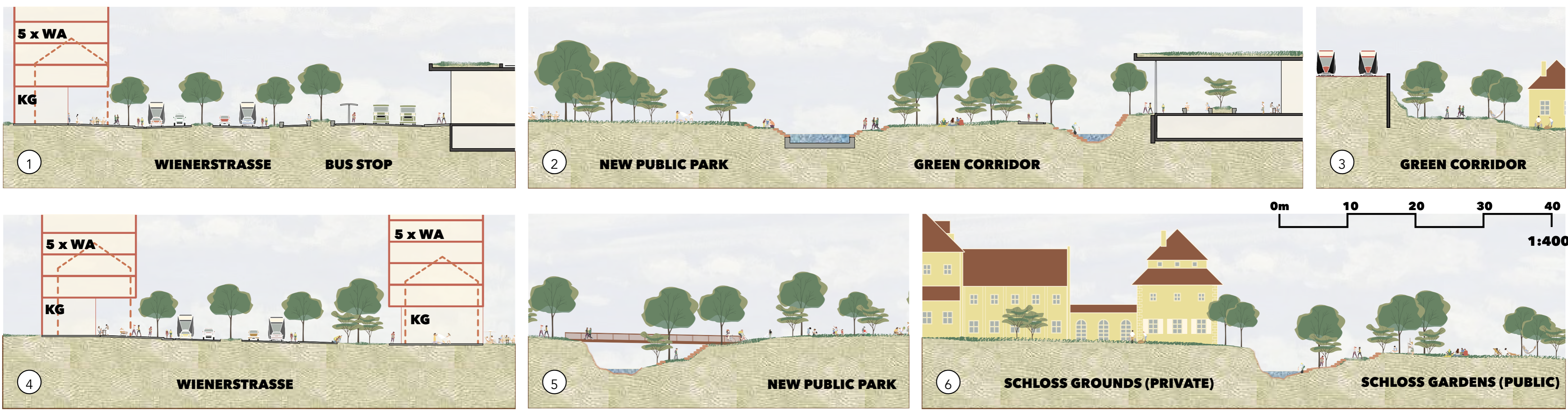
Intentionally, this proposal includes no new roads or impervious surfaces in an effort to prioritise the environment, and active and public transport over cars. This results in a dramatic change to Wienerstrasse to service both cars and trams to better promote the transport hub as a sustainably focused node. A further tramline is also suggested to continue to Shopping Centre Nord where existing carparks can offer a 'Park and Ride' for people travelling to Gösting from the north.

In addition to the renewed streetscape, Wienerstrasse is set to become a vibrant 'downtown' area full of activity through rezoning the properties directly adjacent the street to incentivise development, increase density of people living in central Gösting and provide a greater number of fine grain retail, hospitality, office and co-working spaces at ground level to better activate the public realm along Wienerstrasse.

### PROPOSED IMPLEMENTATION TIMELINE



- ACTION AREA 01**: Food management and greening projects. Create self regulating natural areas. Lush connections and spaces for active transport.
- ACTION AREA 02**: Tie together the fragmented urban pattern by embedding it into a network of publicly shared green open space along the water courses.
- ACTION AREA 03**: Set a plan ensure protection of unlisted historic houses and natural areas that should become reserves and built form regulations that establishes framework for future sensitive and sustainable growth.
- ACTION AREA 04**: Construct tram track, train line, transportation hub and restructure Interspar to all act as new connective node at heart of district to facilitate sustainable mobility and movement of people, goods, knowledge, energy and waste.
- ACTION AREA 05**: Community directed renewal to ensure appropriate densification at human scale to produce lively streets for living, working, making and learning. Enable utilisation of underutilised or vacant sites.



## CURATE AND COLLABORATE WITH COMMUNITY

Empower the entire community in directing renewal outcomes to foster collective support and ensure revitalised urban fabric encapsulates a diversity of offerings for living, working, making and learning. Utilising local resources, knowledge and investment to transform the

key areas of Gösting will enhance both social and physical cohesions across the suburb. Curating identities through a 'place-based' approach for each milieu and working in collaboration with the community will ensure individual places connect to the bigger whole.

## CELEBRATE PUBLIC LIFE

Promoting an activated public realm with a diverse range of interconnected spaces for people to mingle and enjoy will provide a welcoming and inclusive environment for locals and guests in Gösting. Celebrating the area's renewed identity will further establish the

lively activated centre as a destination for all. Providing meaningful connections between old and new residents that will stimulate exchange and grow the social cohesion of the area, which will encourage further implementation of the overall development strategy.



### WIENERSTRASSE

The proposal aims to make a very deliberate change to the face and character of Wienerstrasse. Through a series of interventions we envision Wienerstrasse becoming a vibrant 'downtown' area where its wide street width can provide excellent conditions and a collection of places for public life to play out.

To achieve this we propose rezoning the properties directly adjacent the major road to incentivise development with a requirement for active ground floor uses. This will both increase the density of people living in central Gösting and provide a greater number of fine grain retail, hospitality, office and co-working spaces at ground level to better activate the public realm. Growth opportunities are prioritised for this area as it will have the least impact on existing natural assets and the predominant neighbourhood character of surrounding peri-urban form, furthermore many of the buildings in this area are noted as being in poor condition and needing renewal. Through developing a central activity area, Gösting will begin to present a much more

forward facing identity, one that will entice visitors to come and spend time in the area. In addition to this we propose that Wienerstrasse begins to service both cars and trams as a measure of prioritising the environment, and active and public transport over private car usage. We wish to ensure no new roads or impervious surfaces are produced at the expense of natural habitat and existing buildings to produce a new tramline. This will further promote arriving at the Transport Hub and travelling through Gösting with sustainable transport methods. A further tramline is also suggested to continue to Shopping Centre Nord where existing carparks can offer a 'Park and Ride' for people travelling to Gösting from the north. The goal is to produce and support a vibrant 20 minute neighbourhood with a centre that is not overrun by cars, which includes appropriate densification at human scale and a renewed streetscape that produces a lively area for living, working, making and learning.

### SITE PLAN

#### ROOF UTILIZATION

**SOLAR PANELS**  
Create energy communities. Sharing green electricity.

**GREEN ROOFS**  
Living architecture. Biodiversity and microclimate from the street to the roof.

#### ACTIVE CORNERS

The "round corner" for better visual relations and small plazas along Wienerstrasse.

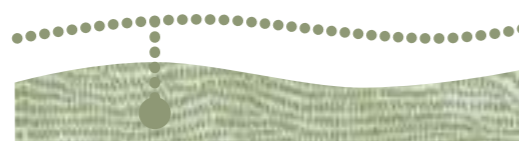
#### TYOLOGIES AND DENSITY

**KG+WA (EA)** Multi use building types to activate the ground and allow urban living.

**FAR 2** Maintain fine-grainedness. Soft densification.

**3,4-6 Levels** Avoid building large new blocks.

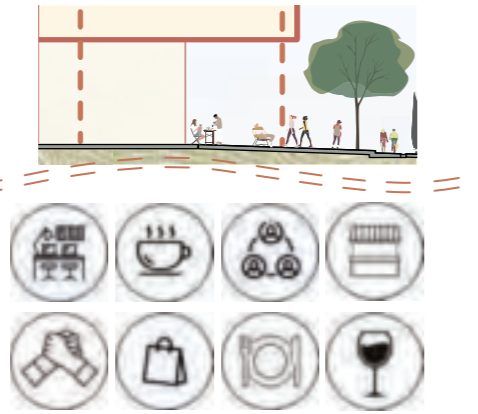
#### OPEN SPACES & PARKS



Facilities provided



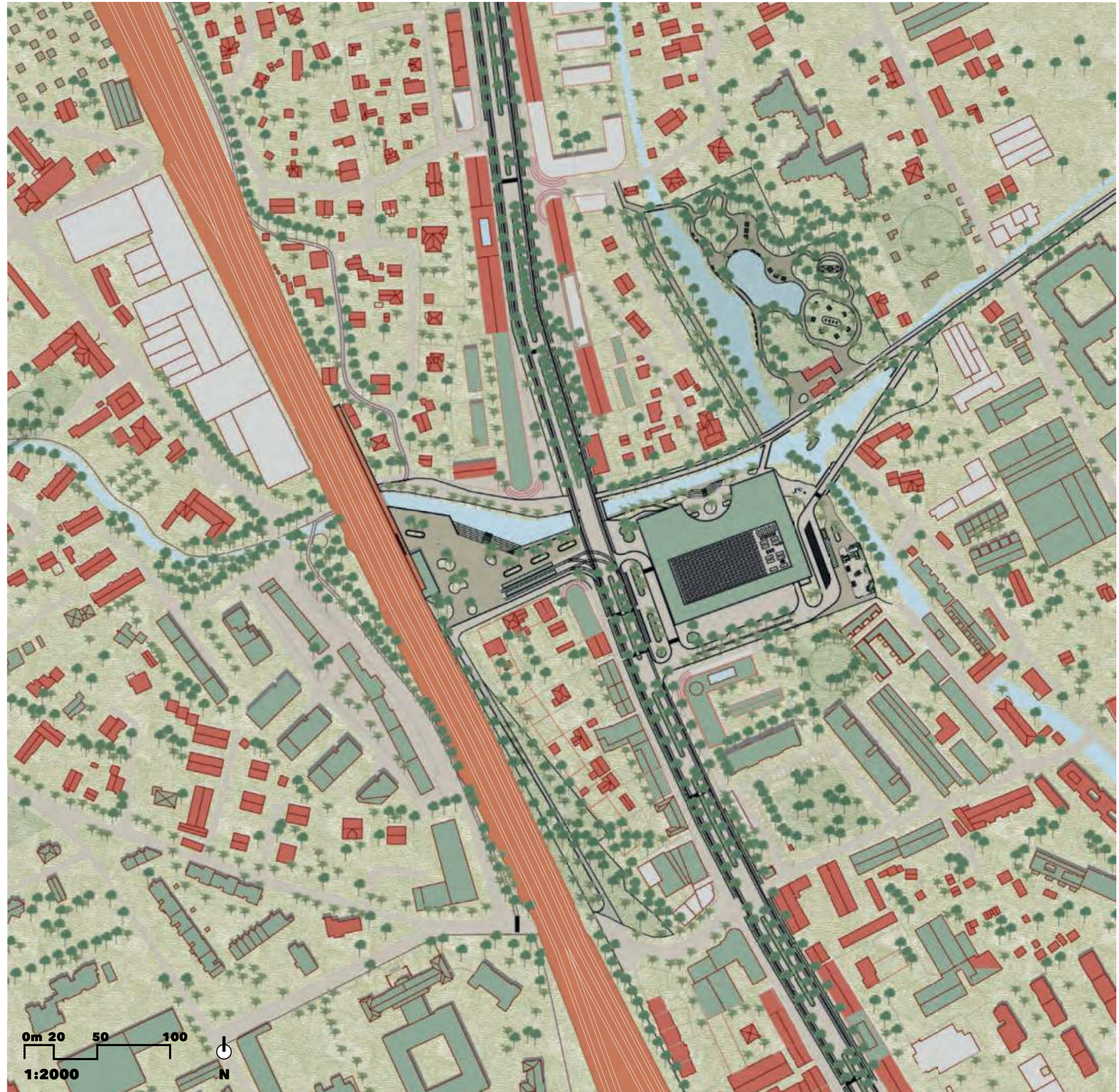
#### NEW PROGRAMM ON WIENERSTRASSE



### APPROACH TO GÖSTING'S MILIEUS

This approach will centre on research, consultation and advocacy as place specific outcomes are to be developed in collaboration with the community. We acknowledge that Gösting is a district comprised of a number of different milieus, each with their own distinct character, constraints and opportunities. To adequately address the complexity of such different conditions we propose to develop a 'Göstinger Placeplan' that would identify a specific vision for each defined milieu and incorporate how the objectives of the overall strategic proposal can relate to that place. Our current proposal describes high level, masterplanning principles that will effect each of the milieus and aim to collectively improve the amenity and well-being of the entire area. A more

granular approach is required for identified areas, such as around the Gründerzeit Villas, allotment gardens and typical residential streetscapes, however this is best undertaken in collaboration and through consulting with the community to gain support for the objectives and to identify areas that require additional consideration. It will further introduce us to the local heroes, the 'lazy land', existing community networks and potential issues that aren't observable through a typical spatial or architectural response. It will also allow support to be expressed for unlisted historical houses, natural areas that should be formally protected and built form regulations to establish a framework for future sensitive and sustainable growth with the backing of the wider community.



### TRANSPORTATION HUB & INTERSPAR

We envision the Transport Hub and central Gösting to act as a connective node that facilitates sustainable mobility and movement of not only people, but also goods, knowledge, energy and waste. As such, along with the construction of the Transport Hub, we also propose to restructure the Interspar site to diversify the range of program available to the community in this location. Half of the existing ground floor footprint remain available to the supermarket, the existing structure and basement carpark will

remain however, hospitality spaces and a new library will front on to a public plaza facing a widened Thalerbach providing a green corridor that connects the Transport Hub through to the new centrally located public park. The rear of the site should be reconfigured to give back space to the community and the roof renewed to include a wide array of PV and greening to reduce impact on waterways and provide solar power back into the grid.

1. Train Station with bike storage, hospitality and convenience stores and public toilets.
2. Open plaza to train station facing onto waterfront. Shade provided with extensive tree canopy.
3. Tram Stop. Double ended trams proposed to decrease spatial impact on public realm.
4. Green corridor leading to high school. Available to active transport only.
5. Ground floor retail / hospitality facing waterfront providing activated streetscape.
6. Bus Stop to replace existing car park.
7. Hospitality Offerings located under existing Spar building.

8. Community Library to include bookable meeting rooms and a range of spaces for study, work and leisure.
9. Reorganised Interspar. Half of previous size - remaining significant 3800m<sup>2</sup>.
10. Short term pickup / drop off zone.
11. Entry to basement carpark from south only.
12. Revised loading zone to include space for community recycling drop off area.
13. Skate Park.
14. Redirected bus route.
15. Extension to Thalerbach to continue through to the Mur.
16. New Public Park.

